

Filter Housing Options - FH-Series

Serving both sanitary and industrial markets Dixon® offers a wide range of filter housings and media options to support your specific filtration needs.

Stocked inventory from our nationwide distribution centers ensures fast delivery to your door. Most media options are supplied in case quantities so you have what you need when you need it. See the individual media options for details.

Sanitary housing

Features

- 32 Ra external surface finish
- 25 Ra internal surface finish
- Sanitary connections
- FDA compliant
- Food grade elastomers
- Simple to clean
- 222 or 226 style elements only
- For hygienic applications

Material

- 316L stainless steel

Industrial housing

Features

- Flanged or NPT ANSI 150#
- For non-hygienic applications

Materials

- Carbon steel, 304 or 316 stainless steel

Not sure what you need? Review this compatibility chart to determine what filtration options are available for your market.

Still have questions? Contact our on-site experts at 800.789.1718 or sanitarysales@dixonvalve.com

Markets	Sanitary	Industrial	
	Cartridge Housing	Cartridge Housing	Bag Housing
	pages 4-5	pages 6-11	pages 12-21
Beer	Δ	X	∞
Beverage	Δ		
Chemical	Δ	X	∞
Coolants		X	∞
Food oil	Δ		
Food processing	Δ		
Liquor		X	∞
Oil extraction	Δ	X	∞
Oil / gas		X	∞
Paint / ink		X	∞
Personal care	Δ		
Pet products			
Pulp / paper		X	∞
Semiconductor	Δ		
Soap / detergents		X	∞
Water, fresh	Δ	X	∞
Water, DI	Δ	X	∞
Water, sea		X	∞
Water, RO	Δ	X	∞
Water, waste		X	∞
Wine	Δ		

- Δ Sanitary cartridge housing and filter options
- X Industrial cartridge housing and filter options
- ∞ Industrial bag housing and filter options

Filter Media Options - DF-Series

Cartridge Filter Element						Bag Filter
Melt Blown	PES	PHE	Carbon Block	Stainless Steel	String Wound	Bag
pages 24-27	pages 28-29	pages 30-31	pages 32-33	pages 34-35	pages 37-39	pages 41-43
ΔX		ΔX		ΔX		
Δ	Δ	Δ	Δ	Δ		
ΔX	ΔX	ΔX		ΔX	X	∞
X		X		X	X	∞
Δ	Δ	Δ	Δ	Δ		
Δ		Δ		Δ		
X			X	X		∞
ΔX	ΔX	ΔX	ΔX	ΔX		∞
X		X		X	X	∞
X		X		X		∞
Δ	Δ	Δ		Δ		
ΔX	ΔX	ΔX	ΔX	ΔX	X	
X		X	X	X	X	∞
Δ	Δ	Δ				
X		X		X	X	∞
ΔX	ΔX	ΔX	ΔX	ΔX	X	∞
ΔX	ΔX	ΔX	ΔX	ΔX	X	∞
X	X	X	X	X	X	∞
ΔX	ΔX	ΔX	ΔX	ΔX	X	∞
X	X	X	X	X	X	∞
Δ	Δ	Δ		Δ		

FH-SC-Series Sanitary Cartridge Filter Element Housings



NOTE: Filter elements are not included with the filter housings and must be ordered separately

Sizes

- Port connection: 1" to 4"
- Number of elements: 1, 3, 5, 7, 12, and 21
- Cartridge element lengths: 10", 20", 30", and 40"

Features

- Single-cartridge element housings utilize a heavy-duty stainless steel clamp closure for ease of element changes
- Multiple cartridge element housings feature a swing bolt closure to ensure positive sealing, and removable bottom plate providing access for cleaning
- Robust construction assures dependable protection for critical process applications
- Custom OEM designs available
- Large variety of cartridge elements available to meet your application needs

Materials

- Product contact: 316L stainless steel
- Non-contact: 304 stainless steel
- 32 Ra O.D. polish; 25 Ra I.D. polish
- Silicone O-ring seals standard; FKM and EPDM optional

Specifications

- **150 PSI** working pressure at **300°F (149°C)**
- 1-1/2" clamp vent/gauge connection standard
- 1/2" clamp drain connection standard
- 222 or 226 cartridge elements
- Clamp connections standard; for other connection options call Dixon Sanitary, 800-789-1718

FH-SC-Series Sanitary Cartridge Filter Element Housings

FH-SC-Series Part Number Key

Part Number Key Ex: FH-SC110A10CS		Series	-	Type	Element Quantity	Element Length	Element Style	Connection Size	Connection Type	Seat Material	Polished
		FH		SC	1	10	A	10	C	S	
Series	Code										
Filter housing	FH	←									
Type	Code										
Sanitary (standard)	SC		←								
Sanitary in-line	SI										
Element Quantity	Code										
1	1				←						
3	3										
5	5										
7	7										
12	12										
21	21										
Element Length	Code										
10"	10					←					
20"	20										
30"	30										
40"	40										
Element Style	Code										
222	A						←				
226	B										
Connection Size	Code										
1"	10							←			
1-1/2"	15										
2"	20										
3"	30										
4"	40										
Connection Type	Code										
Clamp	C								←		
Seat Material	Code										
Silicone (standard)	S									←	
FKM	V										
EPDM	E										
Polished	Code										
32 Ra O.D./25 Ra I.D. (standard)	blank										←
Electro-polish I.D.	1										
Electro-polish I.D./O.D.	2										
Electro-polish O.D.	3										

NOTE: Custom housing options are available.
Please call Dixon Sanitary at 800.789.1718 for further information.

FH-CM-Series Industrial Clamped Cover Multi-Round Cartridge Filter Element Housings



Sizes

- Port connection: 1-1/2" or 2"
- Number of elements: 3, 4, 5, and 7
- Cartridge element lengths: 10", 20", 30", and 40"

Features

- Heavy duty stainless clamp closure with ergonomic grip allows for tool free cartridge changes
- Accepts 10" through 40" length elements (2-3/4" O.D. maximum)
- Universal cups and compression top plate accepts DOE, 222-Flat, or 222-Fin style cartridges
- Differential/drain/vent connections
- Finish: acid wash with electropolish exterior

Materials

- 304, 316, or 316L stainless steel
- Standard EPDM O-ring seals

Specifications

- **150 PSI** design pressure
- **300°F (148°C)** maximum temperature

NOTE: Filter elements are not included with the filter housings and must be ordered separately

FH-CM-Series Industrial Clamped Cover Multi-Round Cartridge Filter Element Housings

FH-CM-Series Part Number Key

Part Number Key Ex: FH-CM0310D1N4E		Series	Type	Element Quantity	Element Length	Element Style	Connection Size	Connection Type	Material	Seal Material
		FH	- CM	03	10	D	1	N	4	E
Series	Code									
Filter housing	FH	←								
Type	Code									
Clamped cover multi-round industrial cartridge housing	CM	←	←							
Element Quantity	Code									
3	03	←		←						
4	04									
5	05									
7	07									
Element Length	Code									
10"	10	←		←						
20"	20									
30"	30									
40"	40									
Element Style	Code									
DOE or 222	D	←				←				
226	6									
Connection Size	Code									
1-1/2"	1	←					←			
2"	2									
Connection Type	Code									
NPT	N	←						←		
Flange	F									
Clamp	C									
Material	Code									
304 stainless steel	4	←							←	
316 stainless steel	6									
316L stainless steel	7									
Seal Material	Code									
EPDM (standard)	E	←								←
FKM	V									
PTFE encapsulated silicone	J									
PTFE encapsulated FKM	R									

FH-BM-Series Industrial Bolted Cover Multi-Round Cartridge Filter Element Housings



Sizes

- Port connection: 1-1/2" to 6"
- Number of elements: 3, 5, 7, 12, 22, 36, and 52 standard, up to 225 upon request
- Cartridge element lengths: 10", 20", 30", and 40"

Features

- Heavy duty eye bolt closure for positive sealing and safety
- Accepts 10" thru 40" length elements (2-3/4" O.D. maximum)
- Universal cups and compression top plate accepts DOE, 222-Flat, or 222-Fin style cartridges
- Bearing assist davit lift cover on all housings over 22 elements
- Differential/drain/vent connections standard
- Finish: passivated with bead blast finish

Materials

- Carbon steel, 304 or 316 stainless steel
- Standard nitrile rubber O-ring seals

Specifications

- 150 PSI design pressure
- 300°F (148°C) maximum temperature

NOTE: Filter elements are not included with the filter housings and must be ordered separately

FH-BM-Series Part Number Key

Part Number Key EX: FH-BM0310D1NACB		Series	Type	Element Quantity	Element Length	Element Style	Connection Size	Connection Type	Outlet Location	Material	Seal Material
		FH	- BM	03	10	D	1	N	A	C	B
Series	Code	Part number key continues on next page									
Filter housing	FH										
Type	Code										
Bolted cover multi-round industrial cartridge housing	BM										
Element Quantity	Code										
3	03										
5	05										
7	07										
12	12										
22	22										
36	36										
52	52										

FH-BM-Series Industrial Bolted Cover Multi-Round Cartridge Filter Element Housings

FH-BM-Series Part Number Key (continued)

Part Number Key EX: FH-BM0310D1NACB		Series	Type	Element Quantity	Element Length	Element Style	Connection Size	Connection Type	Outlet Location	Material	Seal Material
		FH	- BM	03	10	D	1	N	A	C	B
Element Length	Code										
10"	10										
20"	20										
30"	30										
40"	40										
Element Style	Code										
DOE or 222	D										
226	6										
Connection Size	Code										
1-1/2"	1										
2"	2										
3"	3										
4"	4										
6"	6										
Connection Type	Code										
NPT	N										
Flange	F										
Clamp	C										
Outlet Location	Code										
Side	A										
Bottom	B										
Material	Code										
Carbon steel	C										
304 stainless steel	4										
316 stainless steel	6										
Seal Material	Code										
NBR (standard)	B										
EPDM	E										
FKM	V										
PTFE encapsulated Silicone	T										
PTFE encapsulated FKM	R										

NOTE: Custom housing options are available.
Please call Dixon Sanitary at 800.789.1718 for further information.

FH-CS-Series Industrial Clamped Cover Single Cartridge Filter Element Housings



Sizes

- Port connection: 3/4" or 1"
- Number of elements: 1
- Cartridge element lengths: 10", 20", and 30"

Features

- Heavy duty clamp closure for tool free element changes
- Standard design accepts DOE and 222 style cartridges (2-3/4" O.D. maximum)
- 316 stainless steel ergonomic threaded nut accommodates different length elements (9-3/4" vs. 10")
- Drain/vent connections
- Finish: acid wash with electropolish exterior

Materials

- 304, 316, or 316L stainless steel
- Standard EPDM O-ring seals
- Stainless steel mounting bracket standard

Specification

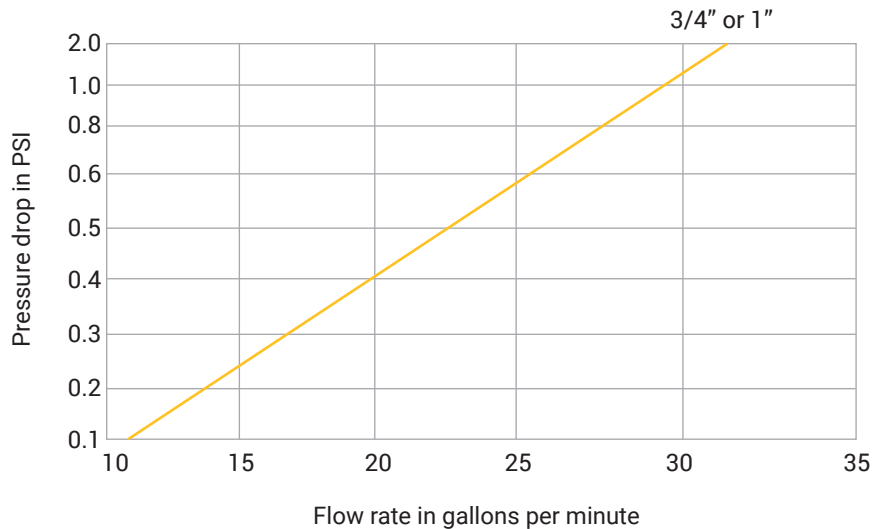
- **150 PSI** maximum working pressure

NOTE: Filter elements are not included with the filter housings and must be ordered separately

Housing Data

Size	Cartridge Length	Maximum Flow (GPM)
10	9-3/4" to 10"	7
20	19-1/2" to 20"	14
30	30"	21

Pressure Drop



NOTE: Maximum flow rates and pressure drops through housing determined with water and no filter installed. Viscosity, filter type, and connection size will affect flow rates and pressure drops. Please refer to sizing charts or contact Dixon Sanitary for proper selection.

FH-CS-Series Industrial Clamped Cover Single Cartridge Filter Element Housings

FH-CS-Series Part Number Key

Part Number Key EX: FH-CS10D075N4E		Series	-	Type	Cartridge Length	Element Style	Connection Size	Connection Type	Material	Seal Material
		FH		CS	10	D	075	N	4	E
Series	Code	FH	-	CS	10	D	075	N	4	E
Filter housing	FH									
Type	Code	FH	-	CS	10	D	075	N	4	E
Clamped cover single industrial cartridge housing	CS									
Cartridge Length	Code	FH	-	CS	10	D	075	N	4	E
10"	10									
		FH	-	CS	10	D	075	N	4	E
20"	20									
		FH	-	CS	10	D	075	N	4	E
30"	30									
Element Style	Code	FH	-	CS	10	D	075	N	4	E
DOE or 222	D									
		FH	-	CS	10	D	075	N	4	E
226	6									
Connection Size	Code	FH	-	CS	10	D	075	N	4	E
3/4"	075									
		FH	-	CS	10	D	075	N	4	E
1"	1									
Connection Type	Code	FH	-	CS	10	D	075	N	4	E
NPT	N									
		FH	-	CS	10	D	075	N	4	E
Flange	F									
		FH	-	CS	10	D	075	N	4	E
Clamp	C									
Material	Code	FH	-	CS	10	D	075	N	4	E
304 stainless steel	4									
		FH	-	CS	10	D	075	N	4	E
316 stainless steel	6									
		FH	-	CS	10	D	075	N	4	E
316L stainless steel	7									
		FH	-	CS	10	D	075	N	4	E
Plastic	8									
Seal Material	Code	FH	-	CS	10	D	075	N	4	E
EPDM (standard)	E									
		FH	-	CS	10	D	075	N	4	E
Silicone	S									
		FH	-	CS	10	D	075	N	4	E
FKM	V									
		FH	-	CS	10	D	075	N	4	E
Encapsulated PTFE	P									

FH-CSB-Series Industrial Clamped Cover Single Bag Filter Housings



Sizes

- #1, #2, #3, #4, and #12

Features

- Heavy duty stainless steel clamp closure with ergonomic grip allows for tool free bag changes
- Differential/vent connections
- Finish: acid wash with electropolish exterior

Materials

- 304, 316, or 316L stainless steel
- 316 stainless steel restrainer basket with 9/64" perforations
- Stainless steel adjustable legs
- Standard EPDM O-ring seal

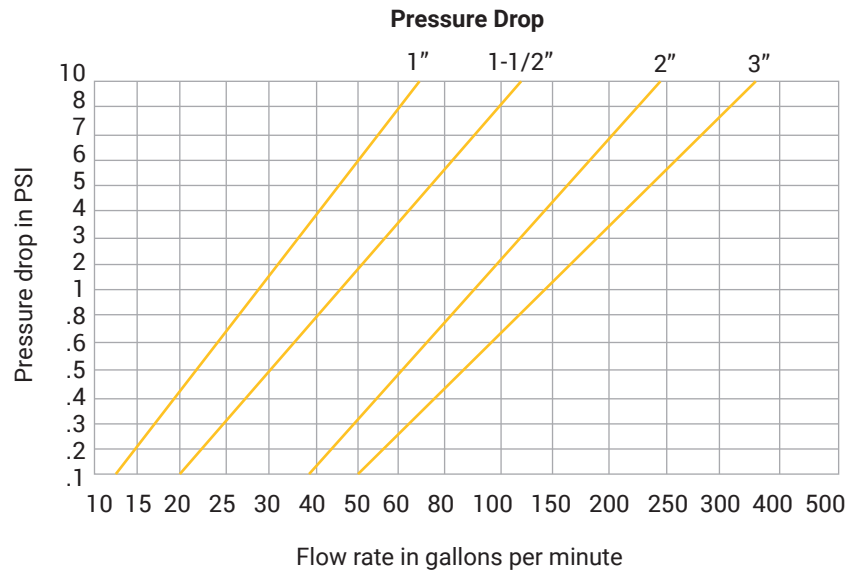
Specification

- **150 PSI** design pressure; **100 PSI** operating pressure

Housing Data

Bag Size	Basket Dims (in)	Surface Area (f2)	Maximum Flow (GPM)
#1	6.7 x 15	2.3	100
#2	6.7 x 30	4.4	200
#3	3.9 x 6	0.5	25
#4	3.9 x 12	1.0	50
#12	8 x 30	5.5	200

NOTE: Filter elements are not included with the filter housings and must be ordered separately



NOTE: Maximum flow rates and pressure drops through housing determined with water and no filter installed. Viscosity, filter type, and connection size will affect flow rates and pressure drops. Please refer to sizing charts or contact Dixon Sanitary for proper selection.

FH-CSB-Series Industrial Clamped Cover Single Bag Filter Housings

FH-CSB-Series Part Number Key

Part Number Key EX: FH-CSB1A10NA4B		Series	Type	Basket Size ¹	Basket Type	Connection Size	Connection Type	Connection Location	Material	Seal Material	
		FH	-	CSB	1	A	10	N	A	4	B
Series	Code	←	←	←	←	←	←	←	←	←	
Filter housing	FH										
Type	Code										
Clamp cover single bag housing	CSB										
Basket Size*	Code	←	←	←	←	←	←	←	←	←	
#1 (6.7" x 15")	1										
#2 (6.7" x 30")	2										
#3 (3.9" x 30") 1" or 1-1/2" connection only	3										
#4 (3.9" x 12") 1" or 1-1/2" connection only	4										
#12 (8" x 30")	12										
Basket Type	Code	←	←	←	←	←	←	←	←	←	
Standard basket	A										
Mesh lined basket	B										
Connection Size	Code	←	←	←	←	←	←	←	←	←	
1"	10										
1-1/2"	15										
2"	20										
3"	30										
Connection Type	Code	←	←	←	←	←	←	←	←	←	
NPT	N										
Flange	F										
Clamp	C										
Connection Location	Code	←	←	←	←	←	←	←	←	←	
Side in/ side out	A										
Side in/ bottom out	B										
Material	Code	←	←	←	←	←	←	←	←	←	
304 stainless steel	4										
316 stainless steel	6										
316L stainless steel	7										
Seal Material	Code	←	←	←	←	←	←	←	←	←	
NBR	B										
EPDM (standard)	E										
FKM	V										
Silicone	S										
Encapsulated PTFE	P										

NOTE: Custom housing options are available.
Please call Dixon Sanitary at 800.789.1718 for further information.

FH-CMB-Series Industrial Clamped Cover Multi-Bag Filter Housings



NOTE: Filter elements are not included with the filter housings and must be ordered separately

Sizes

- Port connection: 3" to 10"
- Number of elements: 2, 3, 4, 5, 6, 7, 8, 10, or 12
- Cartridge element lengths: 10", 20", 30", and 40"

Features

- Holds 2 to 12 filter bags
- Quick clamp opening mechanism for fast bag changes
- Counter balanced spring assist lift for ease of operation
- Differential/drain/vent connections
- Stainless steel 3-point bag locks for positive sealing
- Recessed lip prevents spills during bag changes

Materials

- Carbon steel, 304, or 316 stainless steel
- Industry size #2, 316 stainless steel restrainer basket with 9/64" perforations
- Standard nitrile rubber seals
- Finish: 2-part epoxy on carbon steel/passivation and glass bead on 304 and 316 stainless steel

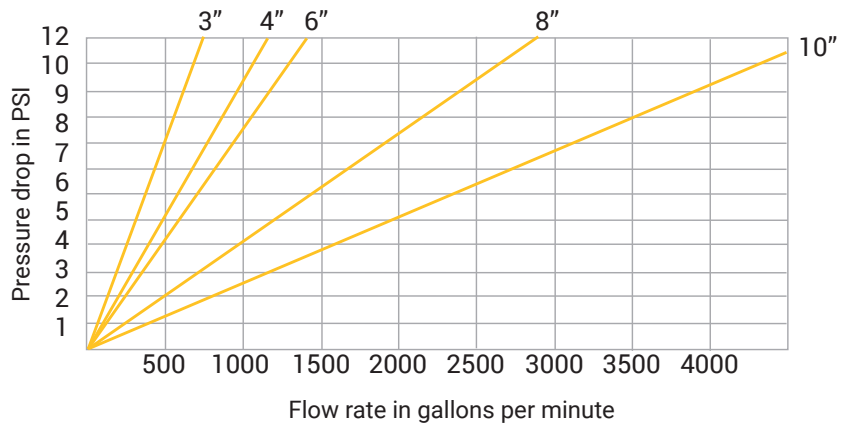
Specifications

- 150 PSI maximum working pressure
- Hydro-tested at 225 PSI
- ANSI #150 R.F. flanged connections (others available on request)

Housing Data

Basket Qty	Surface Area (f2)	Standard Connection	Maximum Flow (GPM)
2	8.8	3"	400
3	13.2	4"	600
4	17.6	4"	800
5	22.0	6"	1000
6	26.4	6"	1200
7	30.8	8"	1400
8	35.2	8"	1600
10	44.0	8"	2000
12	52.8	10"	2400

Pressure Drop



NOTE: Maximum flow rates and pressure drops through housing determined with water and no filter installed. Viscosity, filter type, and connection size will affect flow rates and pressure drops. Please refer to sizing charts or contact Dixon Sanitary for proper selection.

FH-CMB-Series Part Number Key

Part Number Key EX: FH-CMB02A03A1EA		Series	Type	Basket Quantity ¹	Basket Type	Flange Connection Size	Connection Location	Material	Seal Material	ASME Stamp	
Series	Code	FH	-	CMB	02	A	03	A	1	E	A
Filter housing	FH	Part number key continues on next page									
Type	Code										CMB
Clamped cover multi-bag housing	CMB										

FH-CMB-Series Industrial Clamped Cover Multi-Bag Filter Housings

FH-CMB-Series Part Number Key (continued)

Part Number Key EX: FH-CMB02A03A1EA		Series	Type	Basket Quantity ¹	Basket Type	Flange Connection Size	Connection Location	Material	Seal Material	ASME Stamp											
		FH	-	CMB	02	A	03	A	1	E	A										
Basket Quantity¹	Code																				
2	02	¹ Industry size #2 316 stainless steel retainer baskets with 9/64" perforations																			
3	03																				
4	04																				
5	05																				
6	06																				
7	07																				
8	08																				
10	10																				
12	12																				
Basket Type	Code																				
Standard basket	A																				
Mesh lined basket	B																				
Flange Connection Size	Code																				
3"	03																				
4"	04																				
6"	06																				
8"	08																				
10"	10																				
Connection Location	Code																				
Side in/side out	A																				
Bottom in/bottom out	B																				
Material	Code																				
Carbon steel	1																				
304 stainless steel	2																				
316 stainless steel	3																				
Electropolished 304 stainless steel	5																				
Electropolished 316 stainless steel	6																				
Seal Material	Code																				
NBR	B																				
EPDM (standard)	E																				
FKM	V																				
Silicone	S																				
ASME Code Stamp	Code																				
No (standard)	blank																				
Yes	A																				

NOTE: Custom housing options are available.
Please call Dixon Sanitary at 800.789.1718 for further information.

FH-BMB-Series Industrial Bolted Cover Multi-Bag Filter Housings



Sizes

- Port connection: 3" to 12"
- Number of elements: 2, 3, 4, 5, 6, 7, 8, 10, 12, 17, or 23
- Bag size: #2

Features

- Holds 2 to 23 filter bags
- Eye-nut/swing bolt closure for high pressure operation safety
- Davit lift cover with bearing assist for ease of operation
- Differential/drain/vent connections
- Stainless steel 3-point bag locks for positive sealing
- Recessed lip prevents spills during bag changes

Materials

- Carbon steel, 304, or 316 stainless steel
- Industry size #2, 316 stainless steel restrainer basket with 9/64" perforations
- Standard nitrile rubber seals
- Finish: 2-part epoxy on carbon steel/passivation and glass bead on 304 and 316 stainless steel

NOTE: Filter elements are not included with the filter housings and must be ordered separately

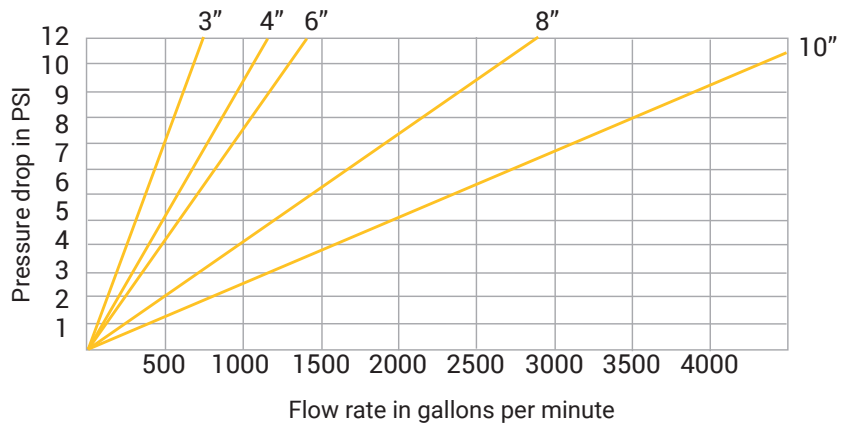
Specifications

- 150 PSI maximum working pressure
- Hydro-tested at 225 PSI
- ANSI 150# R.F. flanged connections (others available on request)

Housing Data

Basket Qty	Surface Area (f2)	Standard Connection	Maximum Flow (GPM)
2	8.8	3"	400
3	13.2	4"	600
4	17.6	4"	800
5	22.0	6"	1000
6	26.4	6"	1200
7	30.8	8"	1400
8	35.2	8"	1600
10	44.0	8"	2000
12	52.8	10"	2400
17	74.8	10"	3400
23	101.2	12"	4600

Pressure Drop



NOTE: Maximum flow rates and pressure drops through housing determined with water and no filter installed. Viscosity, filter type, and connection size will affect flow rates and pressure drops. Please refer to sizing charts or contact Dixon Sanitary for proper selection.

FH-BMB-Series Part Number Key

Part Number Key EX: FH-BMB02A03A1B		Series	Type	Basket Quantity ¹	Basket Type	Flange Connection Size	Connection Location	Material	Seal Material	ASME Stamp
		FH	- BMB	02	A	03	A	1	B	
Series	Code	Part number key continues on next page								
Filter housing	FH									
Type	Code	Part number key continues on next page								
Bolted cover multi-bag housing	BMB									

FH-BMB-Series Industrial Bolted Cover Multi-Bag Filter Housings

FH-BMB-Series Part Number Key (continued)

Part Number Key EX: FH-BMB02A03A1B		Series	Type	Basket Quantity ¹	Basket Type	Flange Connection Size	Connection Location	Material	Seal Material	ASME Stamp
		FH	-	BMB	02	A	03	A	1	B
Basket Quantity¹	Code									
2	02	<div style="display: flex; align-items: center;"> <div style="width: 20px; border-left: 1px solid black; margin-right: 5px;"></div> ← </div> ¹ Industry size #2 316 stainless steel retainer baskets with 9/64" perforations								
3	03									
4	04									
5	05									
6	06									
7	07									
8	08									
10	10									
12	12									
17	17									
23	23									
Basket Type	Code									
Standard basket	A	<div style="display: flex; align-items: center;"> <div style="width: 20px; border-left: 1px solid black; margin-right: 5px;"></div> ← </div>								
Mesh lined basket	B									
Flange Connection Size	Code									
3"	03	<div style="display: flex; align-items: center;"> <div style="width: 20px; border-left: 1px solid black; margin-right: 5px;"></div> ← </div>								
4"	04									
6"	06									
8"	08									
10"	10									
12"	12									
Connection Location	Code									
Side in/side out	A	<div style="display: flex; align-items: center;"> <div style="width: 20px; border-left: 1px solid black; margin-right: 5px;"></div> ← </div>								
Bottom in/bottom out	B									
Material	Code									
Carbon steel	1	<div style="display: flex; align-items: center;"> <div style="width: 20px; border-left: 1px solid black; margin-right: 5px;"></div> ← </div>								
304 stainless steel	2									
316 stainless steel	3									
Electropolished 304 stainless steel	5									
Electropolished 316 stainless steel	6									
Seal Material	Code									
NBR (standard)	B	<div style="display: flex; align-items: center;"> <div style="width: 20px; border-left: 1px solid black; margin-right: 5px;"></div> ← </div>								
EPDM	E									
FKM	V									
Silicone	S									
ASME Code Stamp	Code									
No (standard)	blank	<div style="display: flex; align-items: center;"> <div style="width: 20px; border-left: 1px solid black; margin-right: 5px;"></div> ← </div>								
Yes	A									

NOTE: Custom housing options are available.
Please call Dixon Sanitary at 800.789.1718 for further information.

FH-BSB-Series Industrial Bolted Cover Single Bag Filter Housings



Sizes

- Port connection: 1" to 3"
- Number of elements per housing: 1
- Bag sizes: #1, #2, #3, #4 and #12

Features

- Eye-nut/swing bolt closure for high pressure operation safety
- Differential/drain/vent connections
- 316 stainless steel spring style bag compressor for positive sealing
- Concave evacuation style cover prevents spills during bag changes
- Adjustable support legs

Materials

- Carbon steel, 304, or 316 stainless steel
- 316 stainless steel restrainer basket with 9/64" perforations
- Stainless steel adjustable legs
- Standard nitrile rubber seals
- Finish: 2-part epoxy on carbon steel/passivation and glass bead on 304 and 316 stainless steel

NOTE: Filter elements are not included with the filter housings and must be ordered separately

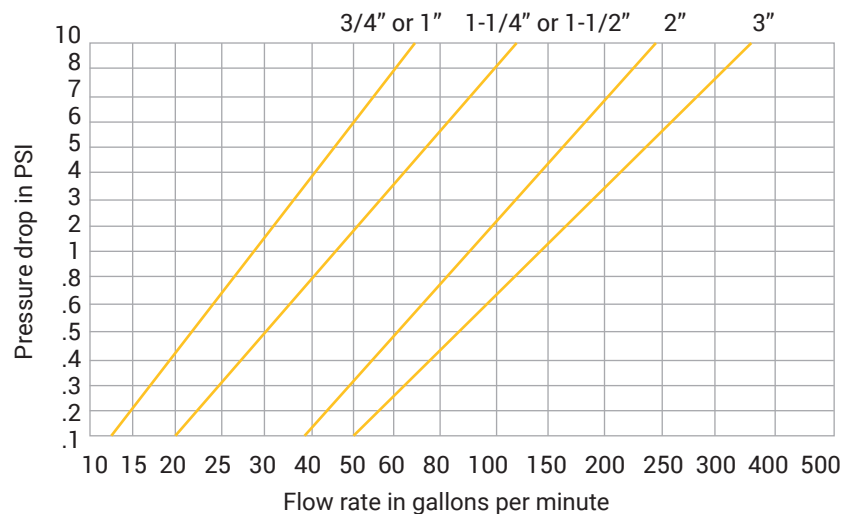
Specifications

- **150 PSI** maximum working pressure at **300°F (149 °C)**
- Hydro-tested at **225 PSI**

Housing Data

Bag Size	Basket Dimensions (in)	Surface Area (f2)	Maximum Flow (GPM)
#1	6.7 x 15	2.3	100
#2	6.7 x 30	4.4	200
#3	3.9 x 6	0.5	25
#4	3.9 x 12	1.0	50
#12	8 x 30	5.5	200

Pressure Drop



NOTE: Maximum flow rates and pressure drops through housing determined with water and no filter installed. Viscosity, filter type, and connection size will affect flow rates and pressure drops. Please refer to sizing charts or contact Dixon Sanitary for proper selection.

FH2BSB-Series Industrial Bolted Cover Dual Bag Filter Housings



NOTE: Filter elements are not included with the filter housings and must be ordered separately

Sizes

- Port connection: 1" to 3", connection sizes must be identical for both housings
- Number of housings: 2
- Number of elements per housing: 1
- Bag sizes: #1, #2, #3, #4, and #12

Features

- Eye-nut/swing bolt closure for high pressure operation safety
- Differential/drain/vent connections
- 316 stainless steel spring style bag compressor for positive sealing
- Concave evacuation style cover prevents spills during bag changes
- Adjustable support legs
- Only available with side in/side out connections

Materials

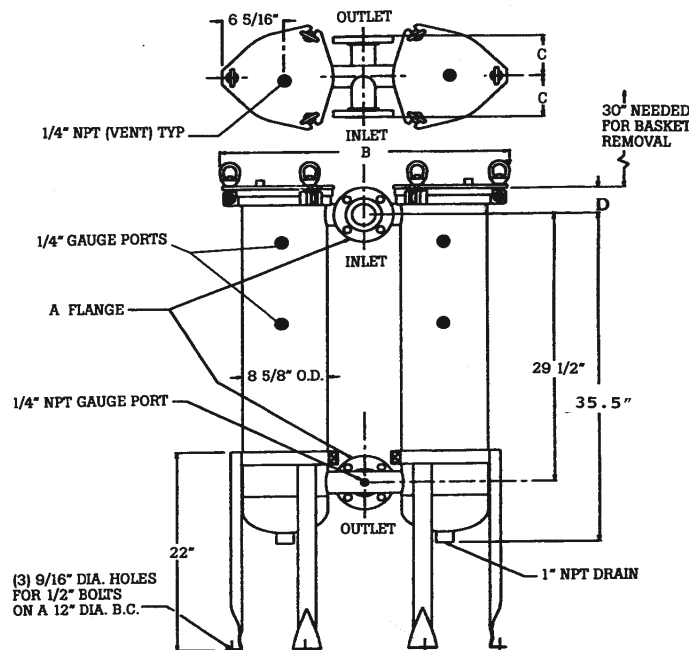
- Carbon steel, 304, or 316 stainless steel
- 316 stainless steel restrainer basket with 9/64" perforations
- Stainless steel adjustable legs
- Standard nitrile rubber seals
- Finish: 2-part epoxy on carbon steel/passivation and glass bead on 304 and 316 stainless steel

Specifications

- **150 PSI** maximum working pressure at **300°F (149°C)**
- Hydro-tested at **225 PSI**
- Maximum flow rate up to **440 GPM**

Dimensions

Flange Size	B (in)	C (in)	D (in)
2"	30.00	4.50	2.875
3"	32.00	5.50	3.75
4"	34.00	6.50	3.75



FH-BSB and FH2BSB-Series Bolted Cover Bag Filter Housings



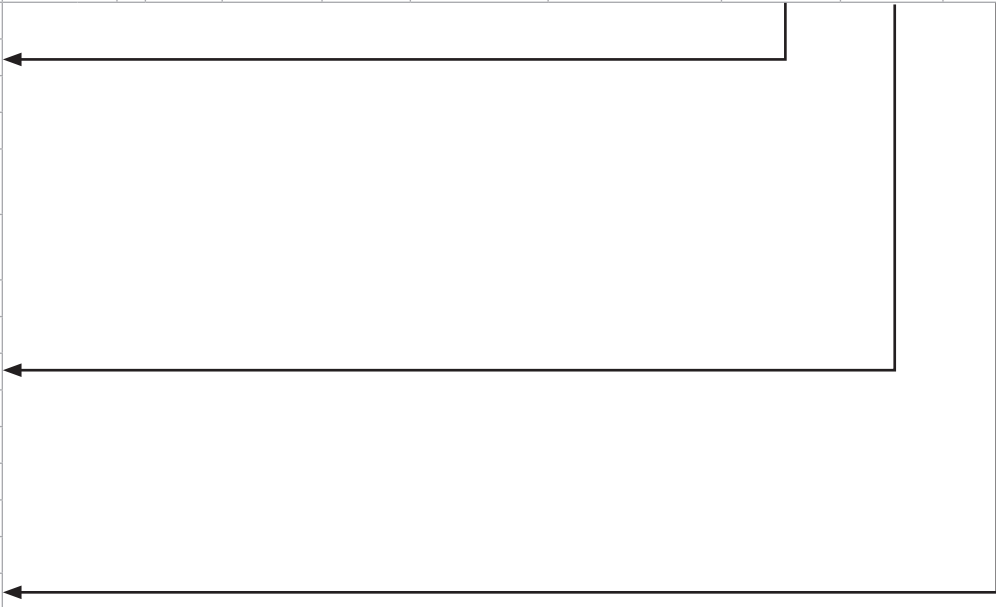
FH-BSB-Series Part Number Key

Part Number Key EX: FH-BSB01A10A1EA		Series	Type	Basket Size ¹	Basket Type	Connection Size	Connection Type /Location	Material	Seal Material	ASME Stamp	
		FH	-	BSB	01	A	10	A	1	E	A
Series	Code	<div style="border: 1px solid black; padding: 5px;"> Part number key continues on next page </div>									
Single filter housing	FH										
Dual filter housing	FH2										
Type	Code										
Bolted cover single bag housing	BSB										
Basket Size ¹	Code										
#1 (6.7" x 15")	01										
#2 (6.7" x 30")	02										
#3 (3.9" x 30") 1" to 1-1/2" only	03										
#4 (3.9" x 12") 1" to 1-1/2" only	04										
#12 (8" x 30")	12										
Basket Type	Code										
Standard basket	A										
Mesh lined basket	B										
Connection Size	Code										
1"	10										
1-1/2"	15										
2"	20										
3"	30										
Connection Location	Code										
NPT side in/ side out	A										
NPT side in/ bottom out ²	B										
Flange side in/ side out	C										
Flange side in/ bottom out ²	D										
Clamp side in/ bottom out ^{2,3}	F										
Top entry, in line/ side out ²	G										

¹ 316 stainless steel retainer baskets with 9/64" perforations
² Not available for Dual Filter Housing
³ Designed for sanitary applications, contact Dixon Sanitary for details

FH-BSB and FH2BSB-Series Bolted Cover Bag Filter Housings

FH-BSB-Series Part Number Key (continued)

Part Number Key EX: FH-BSB01A10A1EA		Series	Type	Basket Size ¹	Basket Type	Connection Size	Connection Type /Location	Material	Seal Material	ASME Stamp	
		FH	-	BSB	01	A	10	A	1	E	A
Material	Code										
Carbon steel	1										
304 stainless steel	2										
316 stainless steel	3										
Electropolished 304 stainless steel	5										
Electropolished 316 stainless steel	6										
Seal Material	Code										
Nitrile Rubber	B										
EPDM (standard)	E										
FKM	V										
Silicone	S										
Encapsulated PTFE	P										
Custom	Code										
None	blank										
ASME stamp	A										

NOTE: Custom housing options are available. Seal kits are available. Please call Dixon Sanitary at 800.789.1718 for further information.

DF-Series Cartridge Filter End Caps

Endless opportunities

Dixon offers a variety of cartridge end cap options, making a wide range of combinations available based on your specific housing needs.

Components have FDA approved polypropylene base, gaskets and O-rings. Materials like nitrile rubber, FKM, PTFE, silicone, neoprene and EPDM make matching most application specifications possible.

End caps are either friction welded or melted to the cartridge, eliminating the need for additional adhesives, binders or foreign materials during the manufacturing process.



226



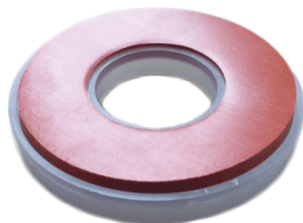
core extender



222



closed cap



DOE / SOE gasket



spring cap



fin cap

DF-Series Filter Media Specifications

It's what's inside that matters

Choosing the right filter media for your application is critical for optimal performance. Product temperature and chemical compatibility determine the right media for the job. Refer to the chart below to help choose the best combination for your process or contact Dixon Sanitary for assistance.



Media	Maximum Temperature	Applications
N - Natural cotton	300°F (149°C)	Same (non-FDA) applications as bleached cotton
C - Bleached cotton FDA	300°F (149°C)	For potable liquids, vegetable oils, beverages, organic solvents, water, dilute acids, petroleum oils, and other services
P - Polyester	250°F (121°C)	Chemical compatibility similar to cotton and polypropylene. Has a higher temperature resistance than polypropylene in most cases
E - Polypropylene	180°F (82°C)	Filtration of organic acids, alkalis, solvents and many other chemicals. Very effective in low viscosity solutions
S - Polypropylene FDA	180°F (82°C)	Same chemical compatibility as polypropylene but complies with FDA regulations that permit contact with food and edible products
R - Rayon	300°F (149°C)	Chemical compatibility similar to cotton. Used primarily in filtration of petroleum oils
Cores	Maximum Temperature	Characteristics
E - Polypropylene FDA	180°F (82°C)	For lower temperature applications of corrosive fluids and gases. Easily incinerated to a trace of ash
S - Tinned steel	375°F (191°C)	General purpose applications
4 - 304 stainless steel	750°F (399°C)	For high temperature dilute acids and moderately corrosive fluids
6 - 316 stainless steel	750°F (399°C)	For high temperature applications and highly corrosive fluids
Gaskets and O-rings	Maximum Temperature	Characteristics
B - Nitrile rubber	300°F (149°C)	Very good resistance to water, alkalis, and many acids. Poor resistance to oils, gasoline, and most solvents (except oxygenated)
V - FKM	450°F (232°C)	Can be used at high temperature with many fuels, lubricants, hydraulic fluids, and solvents
T - PTFE	500°F (260°C)	Excellent resistance to almost all chemicals and solvents. Good heat resistance, exceptionally good low-temperature properties
S - Silicone	600°F (316°C)	Excellent heat resistance. Fair water resistance, poor resistance to steam at high pressures. Fair to good acid and alkali resistance, poor resistance to oils and solvents
N - Neoprene	250°F (121°C)	Good resistance to non-aromatic petroleum, fatty oils, solvents (except aromatic, chlorinated or ketone types). Good water and alkali resistance, fair acid resistance
E - EPDM	300°F (149°C)	Very good water resistance. Excellent resistance to oils and gasoline. Fair to good resistance to acids and alkalis
P - Polyurethane	175°F (80°C)	Servicable down to -30°F (-35°C). Used in very cold environments due to its low temperature resistance. The gasket material won't grow brittle or crack when it's chilled or frozen

DF-MB-Series Melt Blown Cartridge Filters

Quality where it counts

Image A shows a microscopic image of the outer surface of a typical melt blown filter. Most competitors melt the surface of the filter to create smaller openings to achieve higher efficiencies.

Our melt blown filters are manufactured in a way that controls the inner layers' efficiencies separately, allowing the DF-MB-Series to have a more open outer surface as shown in Image B. Not having to sacrifice dirt holding capacity to achieve high efficiency is why the DF-MB-Series is superior to other melt blown filters.

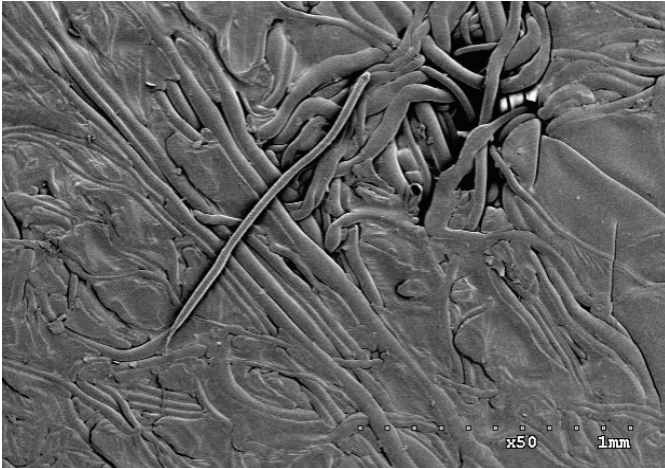


Image A

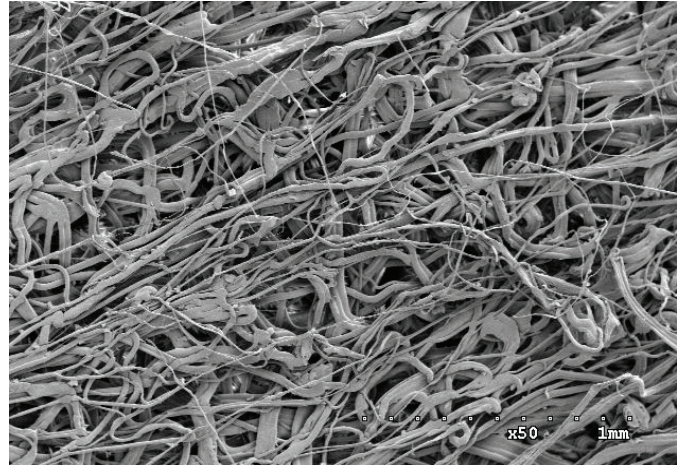
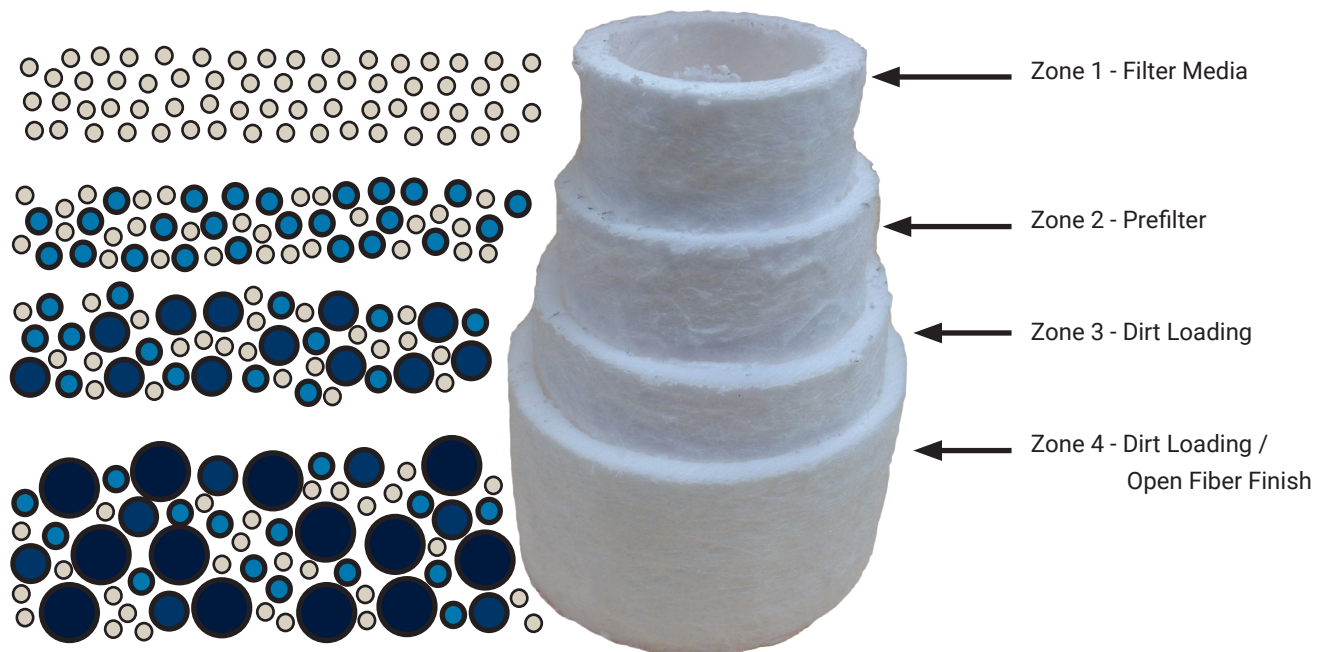


Image B

Multiple layers for maximum filtration

Four distinct zones of density make the DF-MB-Series ideal for step down filtration. The outermost layers are made of larger diameter fibers allowing larger particles to flow through, while the inner most layers trap the fine particles maximizing the life of the filter.



DF-MB-Series Melt Blown Cartridge Filters

Sizes

- Diameters: 2-1/2" (standard) to 4-1/2"
- Cartridge element lengths: 9-3/4" to 50"

Features

- Made in the USA
- FDA title 21 compliant
- No glue or binders
- Low pressure drop
- 4 zone technology within cartridge allows for high dirt loading
- Available in industry standard end connections
- Multiple efficiency options available
 - Pro - 90% - great value
 - Deluxe - 95% - integrated 4 stage depth loading
 - Elite - 99% - heat set surface
 - RO - reverse osmosis applications - no fiber migration
- Most combinations are WQA tested and certified to:
 - NSF / ANSI 372
 - NSF / ANSI 61
 - CSA B483.1
 - NSF / ANSI 42 - component
- All polypropylene components meet the specifications for biological safety per the USP for Class VI-121 C plastics



Materials

- Cartridge element: polypropylene
- Gasket/O-ring: nitrile rubber, FKM, PTFE, silicone, neoprene, EPDM, and polyfoam; no selection required for double open-ended (DOE) cartridge elements

Specifications

- Maximum differential pressure:
 - **40 PSID** (2.7 bar) at **155°F (68°C)**
 - **60 PSID** (4.1 bar) at **86°F (30°C)**
- Recommended change out differential pressure:
 - with core **35 PSID** (2.4 bar)
 - without core **20 PSID** (1.3 bar)
- Micron ratings: 1, 5, 10, 20, 25, 30, 75, and 100
- Sold in standard case quantities only
 - 10" and under are 30 pieces/case
 - 19-1/2" thru 30" are 15 pieces/case
 - 39" and above are determined at time of quote
 - Custom lengths are determined at time of quote

DF-MB-Series Melt Blown Cartridge Filters



DF-MB-Series Part Number Key

Part Number Key EX: DF-MBS100B2E10B		Filter Series	Type	Efficiency	Micron	Length	Diameter	Core	End Cap	Gasket / O-Ring
		DF	- MB	S	100	B	2	E	10	B
Series	Code									
Filter	DF	←								
Type	Code									
Melt blown polypropylene	MB		←							
Efficiency	Code									
90% efficiency pro (standard)	S			←						
95% efficiency deluxe	X									
99% efficiency elite	A									
RO	R									
Micron	Code									
1	1									
5	5									
10	10									
20	20									
25	25									
30	30									
50	50									
75	75									
100	100				←					
Length	Code									
9-3/4"	A									
9-7/8" (standard)	B					←				
10"	C									
19-1/2"	D									
20"	E									
29-1/4"	F									
30"	G									
39"	H									
40"	I									
50"	J									

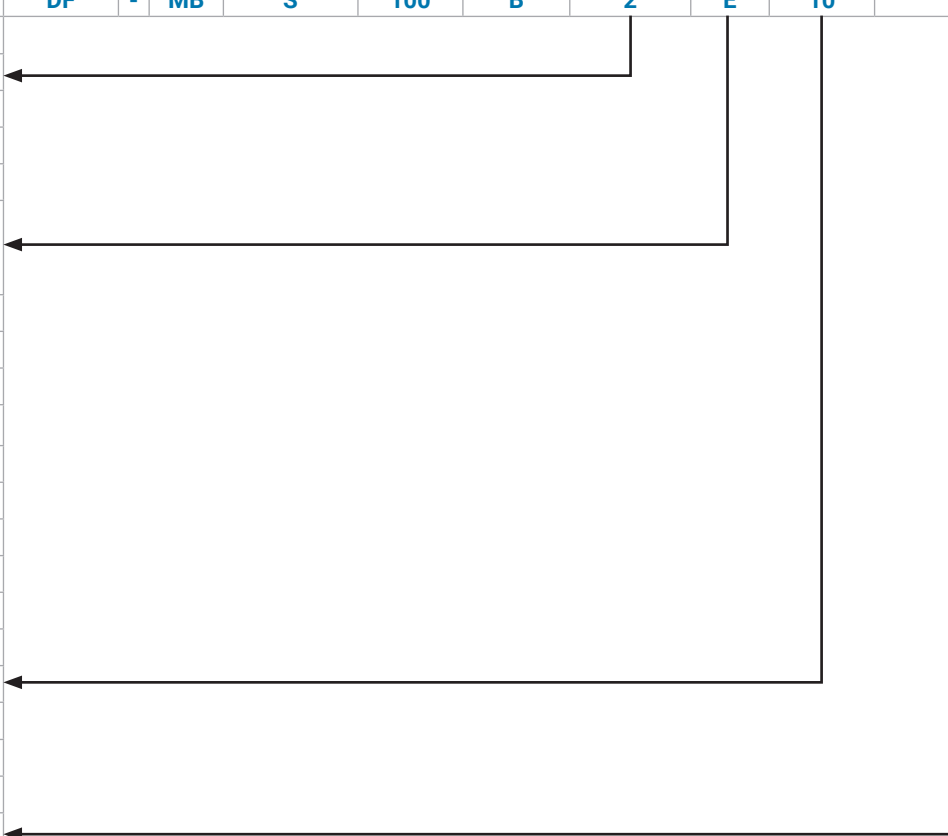
Part number key continues on next page

Sold in standard case quantities only

- 10" and under are 30 pieces/case
- 1-1/2" thru 30" are 15 pieces/case
- 39" and above are determined at time of quote
- Custom lengths are determined at time of quote

DF-MB-Series Melt Blown Cartridge Filters

DF-MB-Series Part Number Key (continued)

Part Number Key EX: DF-MBS100B2E10B		Filter Series	Type	Efficiency	Micron	Length	Diameter	Core	End Cap	Gasket / O-Ring	
		DF	-	MB	S	100	B	2	E	10	B
Diameter	Code										
2-1/2" (standard)	2										
4-1/2" ¹	4										
Core	Code										
No Core	blank										
Polypropylene (required for elite and RO)	E										
End Cap	Code										
DOE/no caps	1										
222/fin ²	2										
222/spring	3										
222/closed	4										
226/closed	5										
226/fin ²	6										
226/spring	7										
SOE/spring	8										
DOE/gasket	9										
Core extender ²	10										
Core extender/spring ²	11										
Gasket/O-ring	Code										
DOE - no gasket cap	blank										
NBR	B										
FKM ²	V										
PTFE ²	T										
Silicone	S										
Neoprene ²	N										
EPDM ²	E										
Polyurethane ²	P										

¹ Only DOE available

² Combinations are not certified by WQA

NOTE: There are many more options, including industrial housing and cartridge elements. All cartridge elements are manufactured to industry standards and are interchangeable with other manufacturers' products. Custom filters are available.

Please call Dixon Sanitary at 800.789.1718 for further information.

DF-PES-Series Cartridge Filters



Sizes

- Diameters: 2.65" O.D.; 1" center I.D.
- Cartridge element lengths: 10" to 40"

Features

- FDA title 21 compliant
- Cartridge elements are constructed in a clean room environment
- Cartridge elements have excellent dirt holding capacity with low flow resistance
- Cartridge elements are free of surfactants, resins, binders, and adhesives
- Low protein binding and chemical compatibility
- Naturally hydrophilic media does not need wetting before use

Materials

- Cartridge element: polyethersulfone
- Core material: polypropylene
- Gasket/O-ring: nitrile rubber, FKM, PTFE, silicone, neoprene, and EPDM

Specifications

- Maximum differential pressure: **45 PSID** (3.1 bar)
- Maximum operating pressure: **45 PSID** (3.1 bar)
- Maximum operating temperature: **175°F (80°C)**
- Micron ratings: .1, .22, .45, .60, .80, 1.2, and 5.0
- Sold in standard case quantities only, all sizes are 6 pieces/case

DF-PES-Series Cartridge Filters

DF-PES-Series Part Number Key

Part Number Key EX: DF-PES.10CE2SR		Filter Series	-	Type	Micron	Length	Core	End Cap	Gasket/O-Ring	18 Megohm Rinse
		DF	-	PES	.10	C	E	2	S	R
Series	Code									
Filter	DF	←								
Type	Code									
Pleated high efficiency polyethersulfone	PES	←								
Micron	Code									
0.10	.10	←								
0.22	.22									
0.45	.45									
0.60	.60									
0.80	.80									
1.20	1.2									
5.00	5									
Length	Code									
10"	C	←								
20"	E									
30"	G									
40"	I									
Core	Code									
Polypropylene	E	←								
End Cap	Code									
222/fin	2	←								
222/closed	4									
226/closed	5									
226/fin	6									
DOE/gasket	9									
Gasket/O-Ring	Code									
NBR	B									
FKM	V									
PTFE	T									
Silicone (standard)	S	←								
Neoprene	N									
EPDM	E									
Option	Code									
No rinse	blank									
18 megohm rinse	R	←								

Sold in standard case quantities only
• All sizes are 6 pieces/case

NOTE: There are many more options, including industrial housing and cartridge elements. All cartridge elements are manufactured to industry standards and are interchangeable with other manufacturers' products. Custom filters are available.

Please call Dixon Sanitary at 800.789.1718 for further information.

DF-PHE-Series Pleated High-Efficiency Cartridge Filters



Sizes

- Diameters: 2.65"
- Cartridge element lengths: 9-3/4" to 40"

Features

- FDA title 21 compliant
- Cartridge elements are constructed in a clean room environment
- Cartridge elements are free of surfactants, resins, binders, and adhesives

Materials

- Cartridge element: polypropylene
- Gasket/O-ring: nitrile rubber, FKM, PTFE, silicone, neoprene, and EPDM

Specifications

- Maximum operating pressure: **35 PSID** (2.4 bar)
- Recommended change out differential pressure: **35 PSID** (2.4 bar)
- Maximum operating temperature: **180°F (82°C)**
- Retention rating of 99.98%
- Micron ratings: .2, .45, 1, 3, 5, 10, 25, and 50
- Available in hard cage (standard) or netted cage
- Sold in standard case quantities only, all sizes are 6 pieces/case
- Surface area: up to 5.5ft squared of effective filtration area per 10", dependent upon micron rating

DF-PHE-Series Part Number Key

Part Number Key EX: DF-PHB.45A1E5SR		Filter Series	Type	Efficiency	Micron	Length	Cage	Core	End Cap	Gasket/O-Ring	18 Megohm Rinse
		DF	- PH	B	.45	A	1	E	5	S	R
Series	Code	Part number key continues on next page ¹ Available in hard cage only ² Available in netted cage only									
Filter	DF										
Type	Code										
Pleated high efficiency polypropylene	PH										
Efficiency	Code										
90%	A										
99.98% (standard)	B										
Micron	Code										
0.2	.20										
0.45	.45										
1	1										
3	3										
5	5										
10	10										
25	25										
50	50										

DF-PHE-Series Pleated High-Efficiency Cartridge Filters

DF-PHE-Series Part Number Key (continued)

Part Number Key EX: DF-PHB.45A1E5SR		Filter Series	Type	Efficiency	Micron	Length	Cage	Core	End Cap	Gasket/ O-Ring	18 Megohm Rinse	
		DF	-	PH	B	.45	A	1	E	5	S	R
Length	Code											
9-3/4" ²	A	Sold in standard case quantities only • All sizes are 6 pcs/case										
10"	C											
19-1/2" ²	D											
20"	E											
29-1/4" ²	F											
30"	G											
39" ²	H											
40"	I											
Cage	Code											
Hard (standard)	1											
Netted	2											
Core	Code											
No core	blank											
Polypropylene (standard)	E											
End Cap	Code											
DOE/plastisol ²	1											
222/fin	2											
222/spring	3											
222/closed	4											
226/closed ¹	5											
226/fin ¹	6											
226/spring ¹	7											
SOE/spring	8											
DOE/gasket	9											
Gasket/O-Ring	Code											
NBR	B											
FKM	V											
PTFE	T											
Silicone (standard)	S											
Neoprene	N											
EPDM	E											
Option	Code											
No rinse	blank											
18 megohm rinse	R											

¹ Available in hard cage only
² Available in netted cage only

NOTE: There are many more options, including industrial housing and cartridge elements. All cartridge elements are manufactured to industry standards and are interchangeable with other manufacturers' products. Custom filters are available.

Please call Dixon Sanitary at 800.789.1718 for further information.

DF-CB-Series Carbon Block Cartridge Filters



Sizes

- Diameters: 1.1" I.D.; 2-1/2" and 4-1/2" O.D.
- Lengths: 9-3/4" to 40"

Features

- Made in the USA
- FDA title 21 compliant
- One piece carbon block construction reduces bypassing
- No GAC bypass or fluidizing
- Consistent density for controlled flow rates and pressure loss
- Reduce foul odors, chlorine taste and particulate matter
- Proprietary carbon blend formula

Materials

- Cartridge element: extruded coconut carbon construction
- End caps: polypropylene, plastisol
- Gasket/O-ring: nitrile rubber, FKM, PTFE, silicone, neoprene, EPDM
- Cover: polypropylene

Specifications

- Micron ratings: 1, 3, 5, and 10
- Recommended differential pressure up to **5 PSID** (0.3 bar)
- Maximum operating temperature: **40° - 125° F (4° - 52° C)**
- Chlorine and odor reduction capacity at flow = > 6,100 gallons @ **1 gallon per minute** based on manufacturer's internal testing
- Internal differential pressure at flow = < **3 PSID @ 1 gallon per minute** based on manufacturer's internal testing
- Sold in standard case quantities only
 - 10" are 30 pieces/case
 - 20" and above are 15 pieces/case

DF-CB-Series Carbon Block Cartridge Filters

DF-CB-Series Part Number Key

Part Number Key EX: DF-CB10A11B		Filter Series		Type	Micron	Length	Diameter	End Cap	Gasket/O-Ring
		DF	-	CB	10	A	1	1	B
Series	Code								
Filter	DF								
Type	Code								
Carbon block	CB								
Micron	Code								
1	1								
3	3								
5	5								
10	10								
Length	Code	Sold in standard case quantities only • 10" are 30 pieces/case • 20" and above are 15 pieces/case							
9-3/4"	A								
9-7/8"	B								
10"	C								
19-1/2"	D								
20"	E								
29-1/4"	F								
30"	G								
39"	H								
40"	I								
Diameter	Code								
2-1/2" (standard)	1								
4-1/2"	2								
End Cap	Code								
DOE - plastisol	1								
222/fin	2								
222/spring	3								
222/closed	4								
226/closed	5								
226/fin	6								
226/spring	7								
SOE/spring	8								
DOE/gasket	9								
Gasket/O-Ring	Code								
NBR	B								
FKM	V								
PTFE	T								
Silicone	S								
Neoprene	N								
EPDM	E								

NOTE: There are many more options, including industrial housing and cartridge elements. All cartridge elements are manufactured to industry standards and are interchangeable with other manufacturers' products. Custom filters are available.

Please call Dixon Sanitary at 800.789.1718 for further information.

DF-SS-Series Stainless Steel Cartridge Filters



Sizes

- Diameters: 2-1/2" and 4-1/2"
- Lengths: 9-3/4" to 40"

Features

- Available in pleated or cylindrical cartridge styles
- Cartridges may be cleaned for extended life
- 5 different end cap configurations
- High temperature applications
- Low differential pressures, allows for viscous applications
- Assembled in the USA
- Pleated cartridge surface area: 1.65ft squared of effective filtration area per 10", dependent upon micron rating
- Cylindrical cartridge surface area: 0.55ft squared of effective filtration area per 10", dependent upon micron rating

Materials

- Cartridge element: 304 and 316 stainless steel
- Gasket/O-ring: nitrile rubber, FKM, PTFE, silicone, neoprene, and EPDM

Specifications

- Micron ratings: 5 to 840
- Recommended differential pressure up to **60 PSID** (4.1 bar)
- Temperature ratings up to **525°F (274°C)**
- Sold in single piece quantities, all sizes 1 piece/carton

DF-SS-Series Part Number Key

Part Number Key EX: DF-SSG840AC9B		Filter Series		Type	Material	Micron	Length	Style	End Cap	Gasket/O-Ring
		DF	-	SS	G	840	A	C	9	B
Series	Code	Part number key continues on next page								
Filter	DF									
Type	Code									
Stainless steel	SS									
Material	Code									
304 stainless steel	G									
316 stainless steel	R									
Micron	Code									
5	5									
10	10									
20	20									
40	40									
75	75									
100	100									
120	120									
150	150									
190	190									
230	230									
280	280									
370	370									
540	540									
840	840									

DF-SS-Series Stainless Steel Cartridge Filters

DF-SS-Series Part Number Key (continued)

Part Number Key EX: DF-SSG840AC9B		Filter Series	-	Type	Material	Micron	Length	Style	End Cap	Gasket/O-Ring
		DF	-	SS	G	840	A	C	9	B
Length	Code	<div style="text-align: left; padding-left: 20px;"> ← Sold as 1 piece/carton </div>								
9-3/4"	A									
10"	C									
19-1/2"	D									
20"	E									
29-1/4"	F									
30"	G									
39"	H									
40"	I									
Style	Code									
Cylindrical (2-1/2" O.D.)	C									
Pleated (2-1/4" O.D.)	P									
End Cap	Code	<div style="text-align: left; padding-left: 20px;"> ← </div>								
DOE/gasket	9									
222/closed	4									
226/closed	5									
1" NPTM	M									
1" NPTF	F									
Gasket/O-Ring	Code	<div style="text-align: left; padding-left: 20px;"> ← </div>								
NBR (standard)	B									
EPDM	E									
Neoprene	N									
Silicone	S									
PTFE	T									
FKM	V									

NOTE: There are many more options, including industrial housing and cartridge elements. All cartridge elements are manufactured to industry standards and are interchangeable with other manufacturers' products. Custom filters are available.

Please call Dixon Sanitary at 800.789.1718 for further information.

DF-SS-Series Stainless Steel Cartridge Filters

End Cap Configurations



222/Closed



226/Closed



NPTM



NPTF

Universal Uses for Stainless Steel Filters



Water



Desalination



Chemicals



Oil & Gas



Air/Gas



Inks/Paints/Coatings

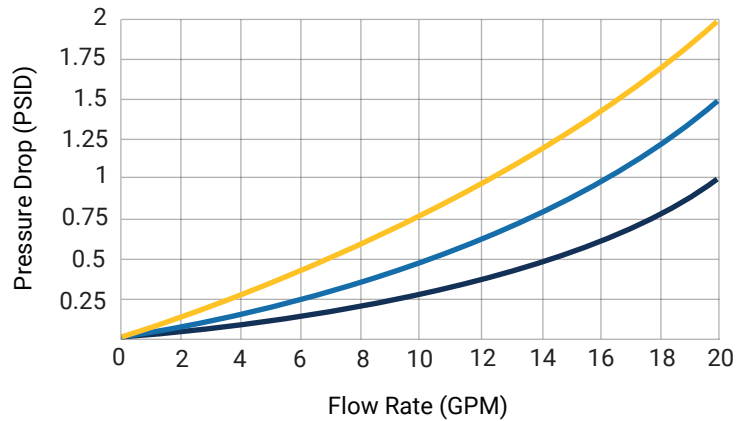


Coolants



Pulp & Paper

Flow Chart



- 5 - 75 Micron
- 75 - 190 Micron
- 230 - 840 Micron

NOTE: This is Dixon's estimate. To our understanding, the data in the graph is correct. Nevertheless, Dixon does not assume liability for the accuracy or entirety of the information. Users should conduct their own tests to ensure the appropriate product is being used. The user is responsible for final ascertainment, the manner of use, and whether there are any violations of patents.

DF-SW-Series String Wound Cartridge Filters

Sizes

- Diameters: 2-1/2" and 4-1/2"
- Lengths: 9-3/4" to 40"

Features

- Made in the USA
- FDA title 21 compliant
- Polypropylene meets NSF 42, 61, and 372 standards
- Consistent thread spacing
- Ink and paint elements have 3-stage winding for depth loading

Materials

- Cartridge element: natural cotton, FDA bleached cotton, polyester, polypropylene, FDA polypropylene, rayon;
- Core material: polypropylene, tinned steel, 304 stainless steel, 316 stainless steel
- Gasket/O-ring: nitrile rubber, FKM, PTFE, silicone, neoprene, EPDM

Specifications

- Micron ratings: .5, 1, 3, 5, 10, 15, 20, 25, 30, 50, 75, 100, 125, 150, and 200
- Maximum differential pressure: **45 PSID** (3.1 bar)
- Sold in standard case quantities only
 - 10" are 50 pieces/case
 - 20" and above are 25 pieces/case
- For high temperature applications **180°F (82°C)** and above: only available with DOE/no caps, no cover, and tinned steel, 304 stainless steel or 306 stainless steel options



DF-SW-Series String Wound Cartridge Filters



DF-SW-Series Part Number Key

Part Number Key EX: DF-WS.50A1EX9B		Filter Series	-	Type	Media	Micron	Length	Diameter	Core	Cover	End Cap	Gasket/O-Ring
		DF		W	S	.50	A	1	E	X	9	B
Series	Code											
Filter	DF	←										
Type	Code											
String wound (standard) ²	W	←										
String wound ink & paint	I											
Media	Code											
Natural cotton	N											
Bleached cotton FDA	C											
Polyester	P											
Polypropylene	E											
Polypropylene FDA ²	S	←										
Rayon	R											
Micron	Code											
0.5	.50	←										
1	1											
3	3											
5	5											
10	10											
15	15											
20	20											
25	25											
30	30											
50	50											
75	75											
100	100											
125	125											
150	150											
200	200											

Part number key continues on next page

¹ Only DOE available

² Combinations are certified by WQA

DF-SW-Series String Wound Cartridge Filters

DF-SW-Series Part Number Key (continued)

Part Number Key EX: DF-WS.50A1EX9B		Filter Series	Type	Media	Micron	Length	Diameter	Core	Cover	End Cap	Gasket/O-Ring	
		DF	-	W	S	.50	A	1	E	X	9	B
Length	Code											
9.75"	A	Sold in standard case quantities only • 4-1/2" diameter are 6 pieces/case • 10" are 50 pieces/case • 20" and above are 25 pieces/case										
10"	C											
19.50"	D											
20"	E											
29.25"	F											
30"	G											
39"	H											
40"	I											
Diameter	Code											
2-1/2" (standard)	1											
4-1/2" ¹	2											
Core	Code											
Polypropylene (standard) ²	E											
Tinned steel	T											
304 stainless steel	G											
316 stainless steel	R											
Cover	Code											
No Cover ²	X											
Polypropylene	E											
Polyester	P											
Nylon	N											
End Cap	Code											
DOE/no caps ²	1											
222/fin ²	2											
222/spring ²	3											
222/closed ²	4											
226/closed	5											
226/fin	6											
226/spring	7											
SOE/spring ²	8											
DOE/gasket ²	9											
Core extender	10											
Core extender/spring	11											
Gasket/O-ring	Code											
NBR ²	B											
FKM	V											
PTFE	T											
Silicone ²	S											
Neoprene	N											
EPDM	E											

¹ Only DOE available
² Combinations are certified by WQA

NOTE: There are many more options, including industrial housing and cartridge elements. All cartridge elements are manufactured to industry standards and are interchangeable with other manufacturers' products. Custom filters are available.

Please call Dixon Sanitary at 800.789.1718 for further information.

DF-B-Series Bag Filters

Sizes

- #1, #2, #3, #4, #5, #7, #8, #9, and #12
- Cuno® #1 and Cuno #2
- Ronningen-Petter® #1 and Ronningen-Petter #2
- Commercial Filters® #1 and Commercial Filters #2

Features

- Made in the USA
- FDA title 21 compliant
- Bag handles are standard
- Produced in a silicone free environment

Materials

- Bag material: Polyester felt, polypropylene felt, polyester multifilament mesh, polypropylene monofilament mesh, nylon multifilament mesh, nylon mono-filament mesh, oil removal

Specifications

- Micron ratings: 1 to 1000
- Maximum operating temperature:
 - Polypropylene: **180°F (82°C)**
 - Polyester: **250°F (121°C)**
 - Nylon: **250°F (121°C)**
- Sold in standard case quantities only
 - Polyester are 50 pieces/case
 - Oil removal are 25 pieces/ case
 - Nylon multifilament are 25 pieces/case
 - Nylon monofilament are 50 pieces/case
 - Polypropylene are 50 pieces/case



DF-B-Series Bag Filters

Steps to determine the pressure drop caused by the filter bag:

Step 1

Select the type of bag, micron rating and flow rate, determine the pressure drop for water, 1 CPS at **68°F/20°C**, for a size 2 bag

Step 2

Correct the bag size from the Bag Size Correction table to the right if the bag size is different than a size 2

Step 3

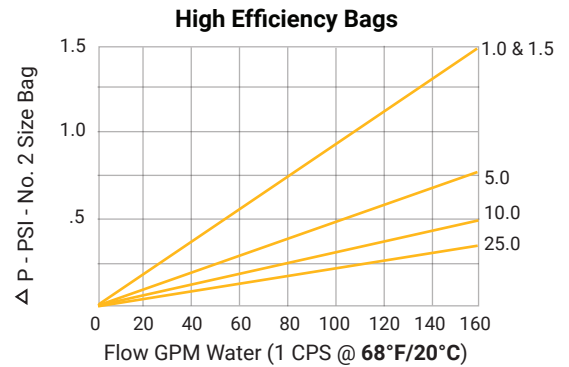
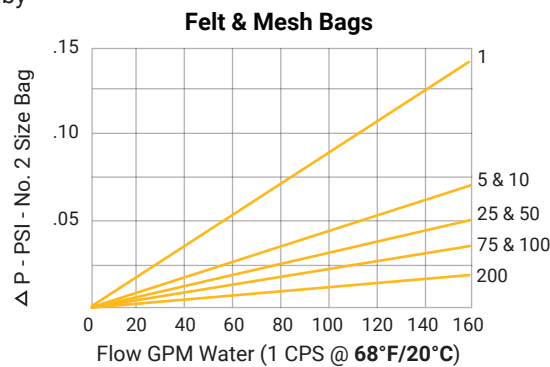
If the viscosity of the liquid is greater than 1 CPS (water at **68°F/20°C**), multiply the result from step 2 by the proper correction factor from the Viscosity Correction table to the right to get the clean pressure drop caused by the filter bag

Bag Size	Surface Area (sq. ft.)	Viscosity (CPS)	Correction Factor
-	-	50	4.5
-	-	100	8.3
1	2.0	200	16.6
1 (inner)	1.6	400	27.7
2	4.4	800	50.0
2 (inner)	3.6	1000	56.2
3	0.5	1500	77.2
4	1.0	2000	113.6
7	1.8	4000	161.0
8	2.0	6000	250.0
9	3.4	8000	325.0
12	5.6	10000	430.0

Bag Size	Diameter x Length	Multiply By
1	7.2" x 16"	2.25
2	7.2" x 32"	1.0
3	4.3" x 8"	9.0
4	4.3" x 14"	4.5
8	5.7" x 21"	2.25
9	5.7" x 37"	1.50

Please contact Dixon Sanitary for any further questions. Call us at: 800.789.1718

The graphs on the right give the clean pressure drop through a number 2 size bag for water, 1 CPS at **68°F/20°C**



Compatibility and Temperature Limits For Standard Bag Materials

Fiber	Compatibility With							Temperature - Limitations (Maximum Degree °F)
	Organic Solvents	Vegetable & Petro Oils	Micro-organisms	Alkalies	Organic Agents	Oxidizing Agents	Mineral Acids	
Polyester	Excellent			Good				300
Polypropylene				Excellent		Good		200
Nylon				Good	Fair	Poor		325

Please call Dixon Sanitary at 800.789.1718 for further information.

DF-B-Series Bag Filters

DF-B-Series Part Number Key

Part Number Key EX: DF-BNMN00012A1D		Filter Series		Type	Media	Micron	Bag Size	Finish or Cover	Ring Style	Handle Option
		DF	-	B	NMN	000	12	A	1	D
Series	Code	Part number key continues on next page								
Filter	DF									
Type	Code									
Sewn bag filter (standard)	B									
Welded bag filter	W									
Media	Code									
Polyester felt	PE									
Polypropylene felt	PO									
Polyester multifilament mesh	PEM									
Polypropylene monofilament mesh	PMO									
Nylon multifilament mesh	NM									
Nylon monofilament mesh	NMN									
Oil removal	OR									
Micron	Code									
Refer to Table 1 for Available Options	-									
Bag Size	Code									
7-1/16" diameter 16-1/2" length	1									
7-1/16" diameter x 32" length	2									
4-1/8" diameter x 8" length	3									
4-1/8" diameter x 14" length	4									
4-1/8" diameter x 24-1/2" length	5									
5-5/8" diameter x 15" length	7									
5-5/8" diameter x 21" length	8									
5-5/8" diameter x 32" length	9									
8" diameter x 32" length	12									
CUNOÓ #1 size housing, 9" diameter x 20" length	A									
CUNOÓ #2 size housing, 9" diameter x 30" length	B									
Ronningen-Petter #1 size housing, 8" diameter x 30" length	C									
Ronningen-Petter® #2 size housing, 8" diameter x 40" length	D									
Commercial Filters® #1 size housing, 7-5/16" diameter x 16-1/2" length	E									
Commercial Filters #2 size housing, 7-5/16" diameter x 31" length	F									

Table 1 (Micron Codes)

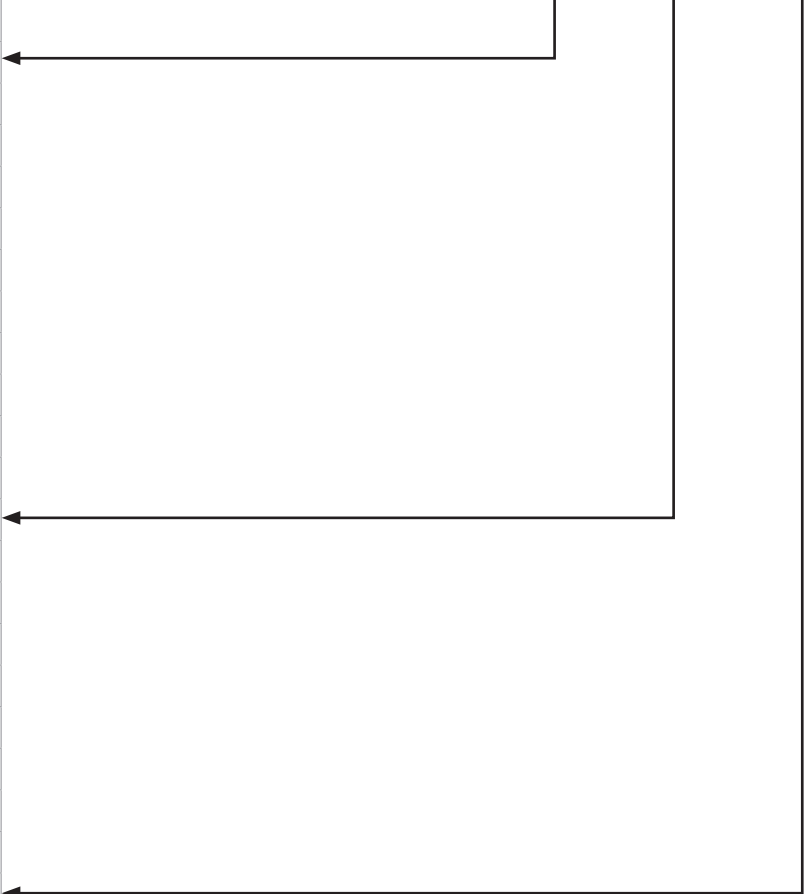
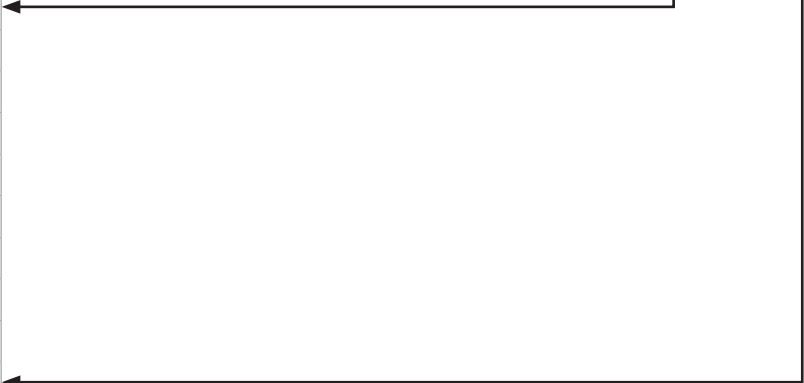

Micron	PE	PO	PEM	PMO	NM	NMN	OR
1	1	1	-	-	-	-	-
5	5	5	-	-	-	5	-
10	10	10	-	-	-	10	-
25	25	25	-	-	-	25	25
50	50	50	-	-	-	50	-
75	75	75	-	-	-	75	-
100	100	100	100	-	-	100	-
150	-	-	150	150	150	150	-
200	200	200	200	200	-	200	-
250	-	-	250	250	-	250	-
300	-	-	-	300	-	300	-
400	-	-	400	400	-	400	-
600	-	-	600	600	-	600	-
800	-	-	800	800	-	800	-
1000	-	-	000	-	-	000	-

Sold in standard case quantities only

- Polyester are 50 pieces/case
- Oil removal are 25 pieces/case
- Nylon multifilament are 25 pieces/case
- Nylon monofilament are 50 pieces/case
- Polypropylene are 50 pieces/case

DF-B-Series Bag Filters

DF-B-Series Part Number Key (continued)

Part Number Key EX: DF-BNMN00012A1D		Filter Series		Type	Media	Micron	Bag Size	Finish or Cover	Ring Style	Handle Option
		DF	-	B	NMN	000	12	A	1	D
Finish or Cover	Code									
None (standard)	A									
Fiber free	B									
Glazed	C									
Nylon monofilament mesh cover	D									
Nylon multifilament mesh cover	E									
Spunbonded nylon	F									
Spunbonded polypropylene cover	G									
Spunbonded polyester cover	H									
Polyester multifilament mesh cover	I									
Automotive	J									
Ring Style	Code									
Carbon steel ring	1									
Stainless steel ring	2									
Polypropylene ring	3									
Drawstring	4									
Polypropylene flange	5									
No ring	6									
Handle Option	Code									
12" handle (standard)	blank									
No handle	N									
Double 12" handle	D									
18" handle	L									
Reverse collar	R									

NOTE: There are many more options, including industrial housing and cartridge elements. All cartridge elements are manufactured to industry standards and are interchangeable with other manufacturers' products. Custom filters are available.

Please call Dixon Sanitary at 800.789.1718 for further information.

Limited Warranty

DIXON VALVE AND COUPLING COMPANY, LLC (herein called "Dixon") warrants the products described herein and manufactured by Dixon to be free from defects in material and workmanship for a period of one (1) year from date of shipment by Dixon under normal use and service. Its sole obligation under this warranty being limited to repairing or replacing, as hereinafter provided, at its option any product found to Dixon's satisfaction to be defective upon examination by it, provided that such product shall be returned for inspection to Dixon's factory within three (3) months after discovery of the defect. The repair or replacement of defective products will be made without charge for parts or labor. This warranty shall not apply to: (a) parts or products not manufactured by Dixon, the warranty of such items being limited to the actual warranty extended to Dixon by its supplier; (b) any product that has been subject to abuse, negligence, accident, or misapplication; (c) any product altered or repaired by others than Dixon; and (d) to normal maintenance services and the replacement of service items (such as washers, gaskets, and lubricants) made in connection with such services. To the extent permitted by law, this limited warranty shall extend only to the buyer and any other person reasonably expected to use or consume the goods who is injured in person by any breach of the warranty. No action may be brought against Dixon for an alleged breach of warranty unless such action is instituted within one (1) year from the date the cause of action accrues. This limited warranty shall be construed and enforced to the fullest extent allowable by applicable law.

Other than the obligation of Dixon set forth herein, Dixon disclaims all warranties, express or implied, including but not limited to any implied warranties of merchantability or fitness for a particular purpose, and any other obligation or liability. The foregoing constitutes Dixon's sole obligation with respect to damages, whether direct, incidental, or consequential, resulting from the use or performance of the product.

Some products and sizes may be discontinued when stock is depleted or may require a minimum quantity for ordering.

About This Catalog and Our Products

This catalog is intended as a product offering. It is not a user or technical manual. Information in this catalog is subject to change without notice. We may modify product design and specification without notice and without any obligation to modify or substitute products previously purchased. All users and distributors of products sold through this catalog are strongly encouraged to contact Dixon with questions on use, compatibilities, coupling procedures, and life of product. Our full-time engineering and test staff are always available to recommend uses and to assist distributors and users with questions.



Safety



Safety logos, which appear throughout our catalog, are used as a reminder that the user should carefully review for the appropriateness of the product for the media, application, and environment in which it will be used.

NOTE: Because of the health hazards associated with contamination and lead content in drinking water systems, Dixon couplings, unless otherwise specifically approved, are not recommended for potable water service and should not be used in applications where drinking water will contact the wetted surfaces of the coupling.

All Dixon products are shipped in cartons with the following warning:

"WARNING: This product contains lead, a chemical known to the State of California to cause cancer and birth defects or other reproductive harm."

Trademarks

All trademarks appearing in the Dixon illustrated product list are the property of their respective owners.

Copyright

Copyright © 2023 by Dixon Valve and Coupling, LLC

All rights reserved. This book is copyrighted material. Use, reproduction or copying of it by anyone other than Dixon® is strictly forbidden without its express written consent.

NOTE: Reasonable care has been taken in preparing this catalog. Dixon Valve & Coupling Company, LLC reserves the right to make corrections.

